

Real-world study of the efficacy and safety of belantamab mafodotin (GSK2857916) in relapsed or refractory multiple myeloma based on data from the nominative ATU in France: the IFM 2020-04 study

Alexis Talbot,^{1*} Arthur Bobin,^{2*} Léa Tabone,³ Jérôme Lambert,⁴ Catherine Boccaccio,³ Cécile Deal,³ Marie-Odile Petillon,⁵ Olivier Allangba,⁶ Philippe Agape,⁷ Pierre Arnautou,⁸ Rakiba Belkhir,⁹ Sylvie Cailleres,¹⁰ Driss Chaoui,¹¹ Marie-Lorraine Chrétien,¹² Olivier Decaux,¹³ Samantha Schulmann,¹⁴ Laurent Frenzel,¹⁵ Lauris Gastaud,¹⁶ Antoine Huart,¹⁷ Cyrille Hulin,¹⁸ Lionel Karlin,¹⁹ Kamel Laribi,²⁰ Ronan Le Calloch,²¹ Pascal Lenain,²² Margaret Macro,²³ Salomon Manier,²⁴ Lydia Montes,²⁵ Stéphane Moreau,²⁶ Philippe Moreau,²⁷ Véronique Morel,²⁸ James Norwood,²⁹ Frédérique Orsini Piocelle,³⁰ Aurore Perrot,³¹ Gian Matteo Pica,³² Philippe Rey,³³ Anna Schmitt,³⁴ Anne-Marie Stoppa,³⁵ Mourad Tiab,³⁶ Cyrille Touzeau,²⁷ Valérie Vidal,³⁷ Marguerite Vignon,³⁸ Laure Vincent,³⁹ Zoé Van De Wyngaert,⁴⁰ Charles Zarnitsky,⁴¹ Naima Kerbouche,⁴² Prani Paka,⁴³ Xavier Leleu,² Bertrand Arnulf¹ and Hervé Avet-Loiseau⁴⁴

¹Hôpital Saint Louis, APHP, Immuno-Hématologie, INSERM U976, équipe 5, Paris, France; ²CHU de Poitiers, Service d'Hématologie et Thérapie Cellulaire, CIC U1402, Poitiers, France; ³IFM Intergroupe Francophone du Myélome, Paris, France; ⁴ECSTRA, Centre de Recherche en Epidémiologie et Statistiques, INSERM UMR 1153, Paris, France; ⁵Hôpital Claude Huriez, Hématologie, Lille, France; ⁶Centre Hospitalier Yves Le Foll, Hématologie-Oncologie, Saint Briec, France; ⁷Centre Hospitalier de Laval, Hématologie, Laval, France; ⁸Hôpital d'Instruction des Armées Percy, Hématologie, Clamart, France; ⁹APHP Bicêtre, Rhumatologie, Kremlin-Bicêtre, France; ¹⁰Centre Hospitalier du Pays d'Aix, Service Hématologie Oncologie, Aix-en-Provence, France; ¹¹Centre Hospitalier Victor Dupouy, Hématologie, Argenteuil, France; ¹²CHU Dijon Bourgogne, Hématologie, Dijon, France; ¹³CHRU Hôpital de Pontchaillou, Hématologie, Rennes, France; ¹⁴HRU Hôpitaux de Brabois, Hématologie, Nancy, France; ¹⁵PHP, Hôpital Universitaire Necker Enfants Malades, Hématologie Adultes, Paris, France; ¹⁶Centre Antoine Lacassagne, Service Onco-Hématologie, Nice, France; ¹⁷CHU Toulouse - Hôpital de Rangueil, Néphrologie, Toulouse, France; ¹⁸CHU Bordeaux, Hématologie et Thérapie Cellulaire, Bordeaux, France; ¹⁹Centre 1 Hospitalier Lyon Sud, Hématologie, Lyon Sud, France; ²⁰Centre Hospitalier du Mans, Hématologie clinique, Le Mans, France; ²¹Centre Hospitalier de Quimper Cornouaille, Service d'Hématologie, Quimper, France; ²²Centre Henri Becquerel, Hématologie, Rouen, France; ²³CHU Caen, Hématologie, Caen, France; ²⁴CHRU Hôpital Claude Huriez, Maladie du Sang, Lille, France; ²⁵CHU Amiens, Hématologie Clinique, Amiens, France; ²⁶CHU de Limoges, Hématologie Clinique et Thérapie Cellulaire, Limoges, France; ²⁷CHU de Nantes - Hôtel Dieu, Hématologie Clinique, Nantes, France; ²⁸APHP Pitié-Salpêtrière, Hématologie Clinique, Paris, France; ²⁹Hôpital du Scorff, Hématologie, Lorient, France; ³⁰CH Annecy Genevois, Hématologie, Annecy, France; ³¹CHU de Toulouse, IUCT-O, Service Hématologie, Université de Toulouse UPS, Toulouse, France; ³²Centre Hospitalier Métropole Savoie, Hématologie, Chambéry, France; ³³Centre Léon Bérard, Onco-Hématologie, Lyon CAC, France; ³⁴Bordeaux Unicancer, Onco-Hématologie, Bordeaux, France; ³⁵IPC Unicancer Marseille, Hématologie, Marseille, France; ³⁶CHD Vendée, Médecine Interne, La Roche-sur-Yon, France; ³⁷APHP Avicenne, Hématologie Clinique, Paris, France; ³⁸APHP Cochin, Hématologie Clinique, Paris, France; ³⁹CHU Montpellier - Hôpital Saint Eloi, Hématologie, Montpellier, France; ⁴⁰APHP Saint Antoine, Hématologie Clinique et Thérapie Cellulaire, Paris, France; ⁴¹Hôpital Jacques Monod, Rhumatologie, Le Havre, France; ⁴²GlaxoSmithKline, GlaxoSmithKline, Rueil Malmaison, France; ⁴³GlaxoSmithKline, Philadelphia, PA, USA and ⁴⁴UC-T Oncopole, Unité de Génomique du Myélome, Toulouse, France

*AT and AB contributed equally as co-first authors.

^oCurrent address: Janssen Pharmaceuticals, Somerville, NJ, USA.

Correspondence: A. Talbot
alexis.talbot.fr@gmail.com

Received: October 14, 2022.

Accepted: April 11, 2023.

Early view: April 20, 2023.

<https://doi.org/10.3324/haematol.2022.281772>

©2023 Ferrata Storti Foundation

Published under a CC BY-NC license

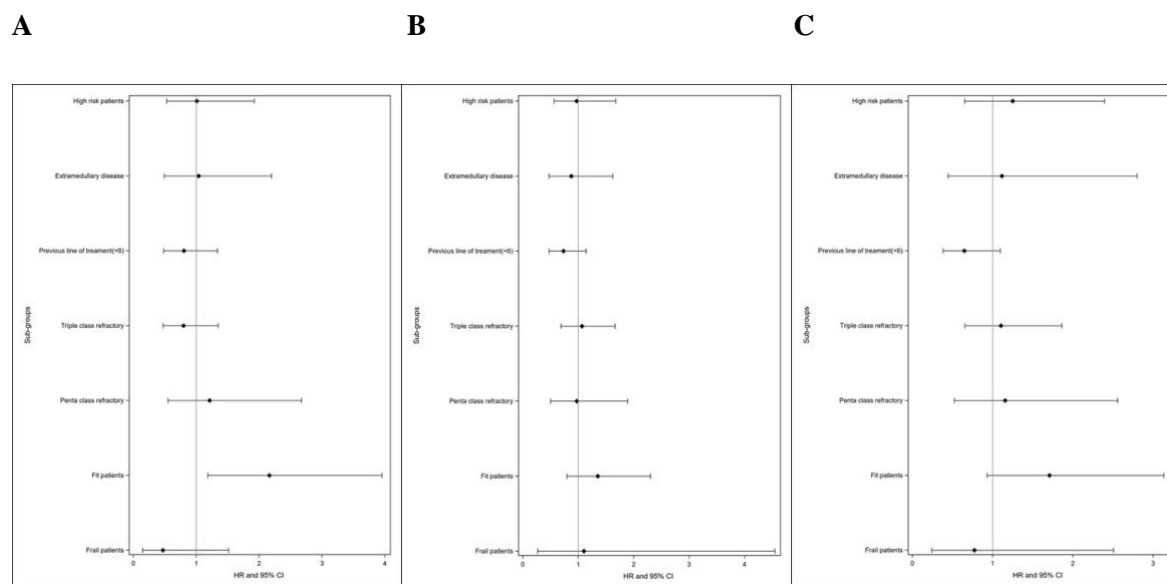


Supplementary Table 1: Overall survival (OS), progression free survival (PFS), time to next treatment (TTNT) in sub-groups analysis.

	n/total	OS Median (months)	HR (95% CI) Two-sided p-value	PFS Median (months)	HR (95% CI) Two-sided p- value	TTNT Median (months)	HR (95% CI) Two-sided p- value
High risk patients	27/66	8.48 vs 8.48	1.01 (0.53,1.92) 0.9820	1.44 vs 3.35	0.97 (0.56,1.68) 0.9172	5.47 vs 3.51	1.25 (0.65,2.40) 0.5015
Extramedullary disease	13/93	14.03 vs 9.10	1.04 (0.49,2.20) 0.9212	3.71 vs 3.17	0.88 (0.47,1.63) 0.6731	6.08 vs 3.91	1.12 (0.44,2.80) 0.8161
Previous line of treatment (<6)	51/97	8.48 vs 10.20	0.80 (0.48,1.34) 0.3958	2.13 vs 4.14	0.73 (0.47,1.14) 0.1674	3.20 vs 6.03	0.65 (0.38,1.09) 0.1014
Triple class refractory	55/97	8.51 vs 14.03	0.80 (0.47,1.35) 0.3932	2.69 vs 3.32	1.07 (0.69,1.66) 0.7686	5.42 vs 3.25	1.10 (0.65,1.86) 0.7129
Penta class refractory	11/97	11.57 vs 8.48	1.21 (0.55,2.67) 0.6337	3.22 vs 3.12	0.98 (0.50,1.89) 0.9410	6.37 vs 3.71	1.16 (0.52,2.56) 0.7199
Fit patients	54/77	16.83 vs 5.03	2.16 (1.18,3.95) 0.0103	3.48 vs 2.66	1.35 (0.80,2.30) 0.2613	6.52 vs 3.10	1.71 (0.93,3.13) 0.0800
Frail patients	3/77	5.98 vs 9.73	0.47 (0.14,1.51) 0.1946	6.47 vs 3.22	1.10 (0.27,4.54) 0.8923	5.98 vs 5.03	0.77 (0.24,2.51) 0.6674

OS: overall survival; HR: high risk; PFS: progression free survival; TTNT: time to next treatment

Supplementary Figure 1: A: Forest plot of overall survival in sub-groups analysis; B: Forest plot of progression free survival in sub-groups analysis; C: Forest plot of time to next treatment in sub-groups analysis



Supplementary Figure 2: Forest plot of overall response rate (ORR) in sub-groups analysis.

