

**BNT162b2 COVID-19 and ChAdOx1 nCoV-19 vaccination in patients with myelodysplastic syndromes**

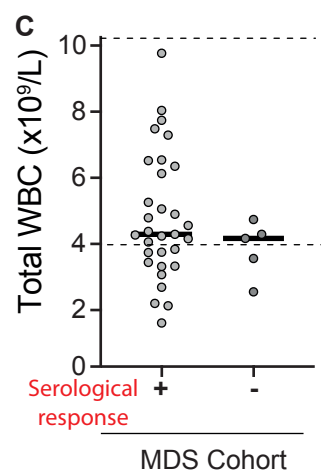
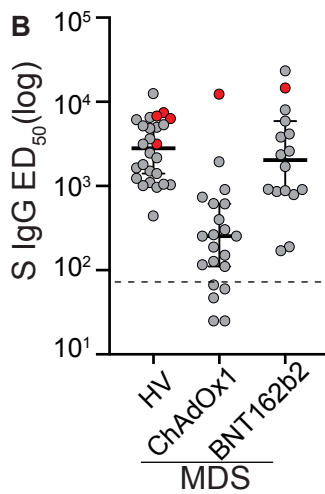
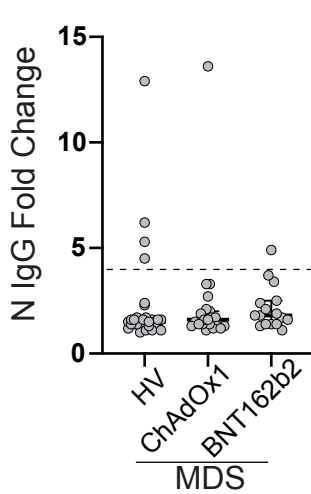
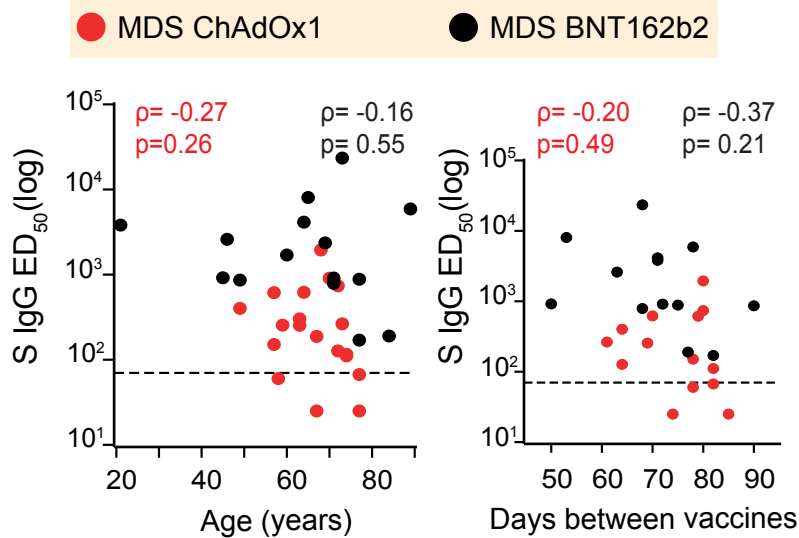
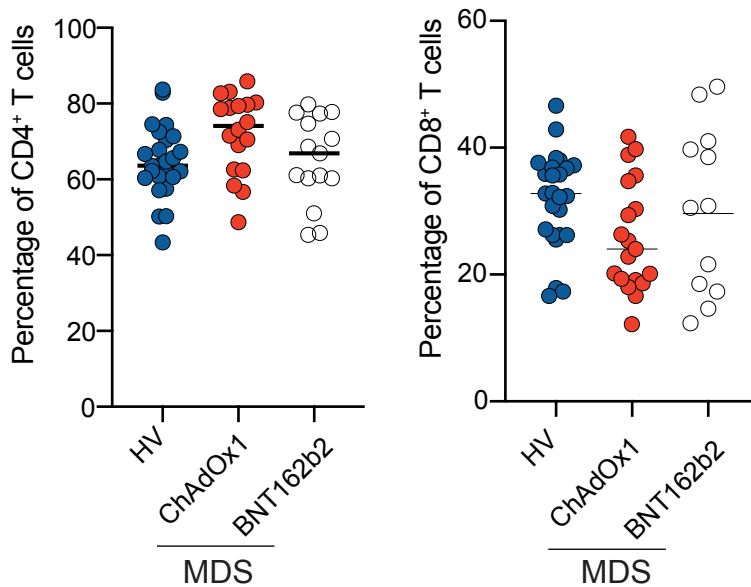
*Sultan Abdul-Jawad,<sup>1\*</sup> Richard Beatson,<sup>1\*</sup> Thomas Lechmere,<sup>2\*</sup> Rosalind Graham,<sup>1</sup> Thanussuyah Alaguthurai,<sup>1,3</sup> Carl Graham,<sup>2</sup> Jennifer Vidler,<sup>4</sup> Austin Kulasekararaj,<sup>4</sup> Piers EM Patten,<sup>1,4</sup> Katie J Doores<sup>2</sup> and Sheeba Irshad<sup>1,3,5,6</sup>*

*<sup>1</sup>Comprehensive Cancer Center, School of Cancer & Pharmaceutical Sciences, King's College London; <sup>2</sup>Department of Infectious Diseases, School of Immunology & Microbial Sciences, King's College London; <sup>3</sup>Breast Cancer Now Research Unit, King's College London; <sup>4</sup>Department of Hematological Medicine, King's College Hospital; <sup>5</sup>Guy's and St Thomas' NHS Foundation Trust; <sup>6</sup>Cancer Research UK (CRUK) Clinician Scientist, London, UK*

*\*SAJ, RB and TL contributed equally as co-first authors*

*Correspondence: SHEEBA IRSHAD - [sheeba.irshad@kcl.ac.uk](mailto:sheeba.irshad@kcl.ac.uk)*

*doi:10.3324/haematol.2021.280337*

**A****D****E**

## **BNT162b2 COVID-19 and ChAdOx1 nCoV-19 vaccination in patients with myelodysplastic syndromes**

Sultan Abdul-Jawad<sup>1\*</sup>, Richard Beatson<sup>1\*</sup>, Thomas Lechmere<sup>2\*</sup>, Rosalind Graham<sup>1</sup>, Thanussuyah Alaguthurai<sup>1,3</sup>, Carl Graham<sup>2</sup>, Jennifer Vidler<sup>4</sup>, Austin Kulasekararaj<sup>4</sup>, Piers EM Patten<sup>1,4</sup>, Katie J Doores<sup>2</sup>, Sheeba Irshad<sup>1,3,5,6</sup>.

<sup>1</sup>Comprehensive Cancer Centre, School of Cancer & Pharmaceutical Sciences, King's College London, UK

<sup>2</sup>Department of Infectious Diseases, School of Immunology & Microbial Sciences, King's College London, UK

<sup>3</sup>Breast Cancer Now Research Unit, King's College London, London, UK

<sup>4</sup>Department of Haematological Medicine, King's College Hospital, London, UK

<sup>5</sup>Guy's and St Thomas' NHS Foundation Trust, London, UK

<sup>6</sup>Cancer Research UK (CRUK) Clinician Scientist, London, UK

\*equal contributions;

Correspondence to:

[sheeba.irshad@kcl.ac.uk](mailto:sheeba.irshad@kcl.ac.uk)

### **Figure Legends**

**Supplementary Figure 1. A.** Plasma concentrations of IgG antibodies reactive to the N-protein of SARS-CoV-2 (N IgG). Healthy volunteer (HV; n=30), MDS patients vaccinated with ChAdOx1 (MDS ChAdOx1; n=21), MDS patients vaccinated with BNT162b2 (MDS BNT162b2; n=16). **B.** Plasma concentrations of IgG antibodies reactive to the spike protein of SARS-CoV-2 (S IgG). Red indicates individuals also positive for N IgG. N numbers as in A. **C.** Quantification of clinical white blood cells on routine blood tests around the time of vaccination amongst MDS patients comparing serological responders with serological non-responder. Dashed lines represent healthy ranges. **D:** Correlation matrices showing plasma S IgG dilution at 50% maximum binding ( $ED_{50}$ ) (log) against age and days between vaccination in the MDS ChAdOx1 (n=20) and MDS BNT162b2 (n=15) cohorts. Correlation coefficients ( $\rho$ ;r) and p values are given. Dashed lines represent threshold as previously described. Pearson's correlation test. **E:** Percentage of CD4<sup>+</sup> and CD8<sup>+</sup> T cells amongst the PBMCs plated for ELISpot for each of the cohorts.