

Modern, real-world patterns of care and clinical outcomes among patients with newly diagnosed diffuse large B-cell lymphoma with or without double/triple-hit status in the United States

Gaurav Goyal,¹ Tylan Magnusson,² Xiaoliang Wang,³ James Roose,³ Mayur Narkhede¹ and Erlene Seymour³

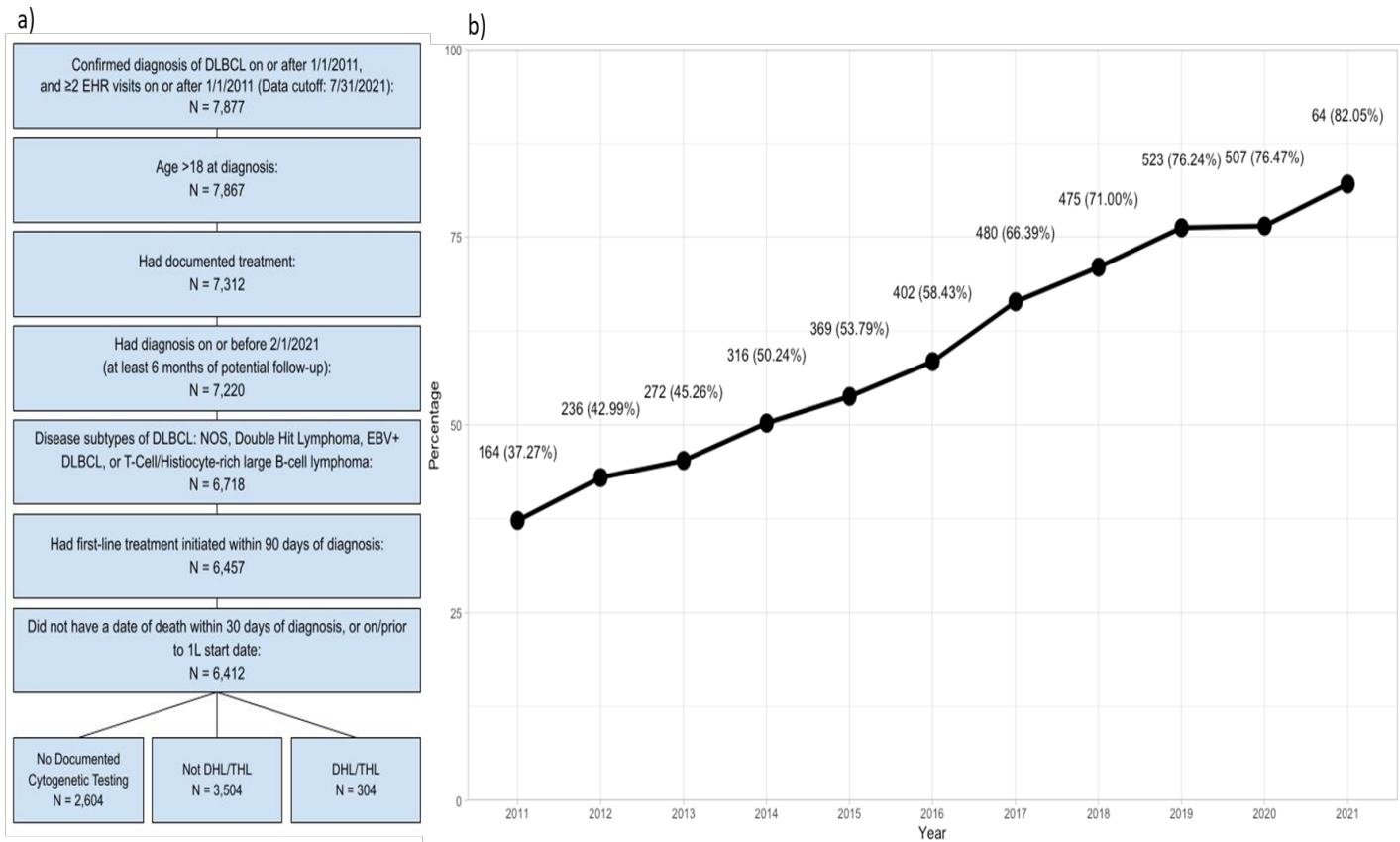
¹Division of Hematology-Oncology, University of Alabama at Birmingham, Birmingham, AL; ²Department of Internal Medicine, University of Alabama at Birmingham, Birmingham, AL and ³Flatiron Health, New York, NY, USA

Correspondence: G. GOYAL - ggoyal@uabmc.edu

<https://doi.org/10.3324/haematol.2022.281461>

Supplemental Figures

Supplemental Figure S1a. Patient selection flowchart for the cohort of patients with diffuse large B-cell lymphoma, and S1b. Annual trends of documented cytogenetic testing among patients with DLBCL (2011-2021).



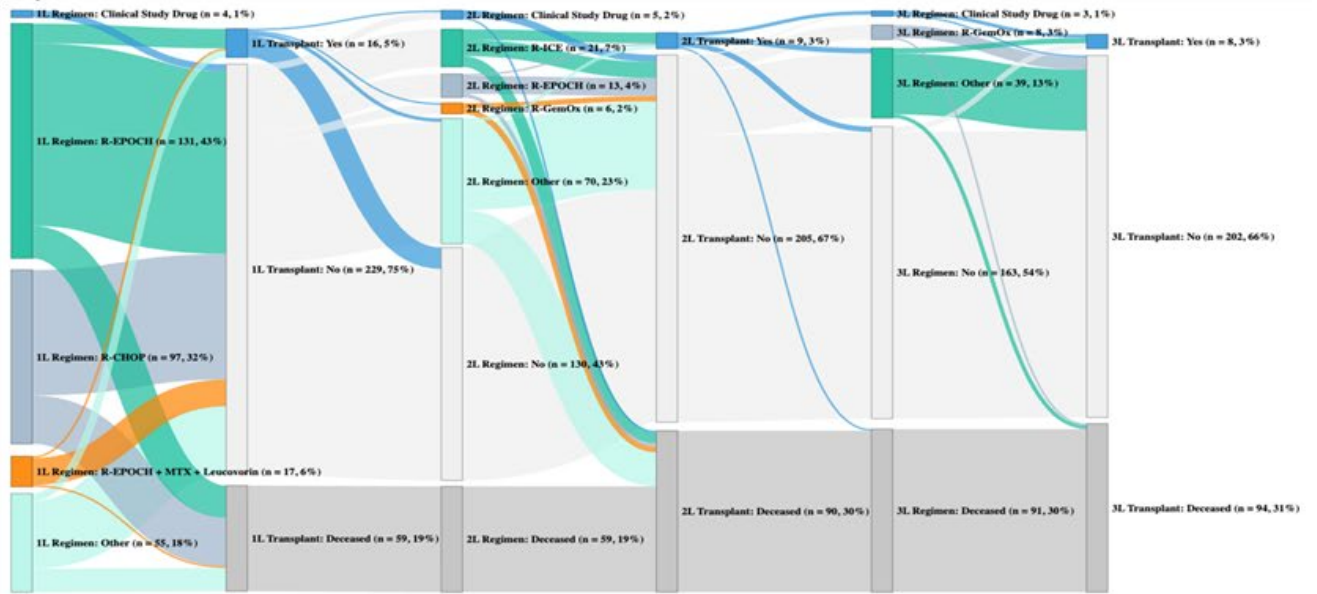
Supplemental Table S1. Sensitivity analysis for a) rwOS and b) TTNT by 1L treatment (R-EPOCH vs R-CHOP) among patients with DHL/THL DLBCL

Analysis	rwOS		TTNT	
	aHR ^a	95% CI	aHR ^a	95% CI
Primary analysis	0.51	0.32 - 0.82	0.44	0.29 - 0.66
Add leucovorin in 1L treatment groups	0.48	0.30 - 0.77	0.42	0.28 - 0.64
Exclude patients with 1L transplant	0.59	0.37 - 0.95	0.51	0.34 - 0.77
Exclude patients aged 80 or older	0.55	0.33 - 0.93	0.45	0.29 - 0.71
Exclude previously transformed patients	0.58	0.34 - 0.99	0.41	0.25 - 0.67
Multiple imputation for missing values and propensity-score matching	0.52	0.33 - 0.83	0.50	0.33 - 0.74
Multiple imputation for missing values and inverse probability of treatment weighting	0.60	0.38 - 0.95	0.53	0.36 - 0.77

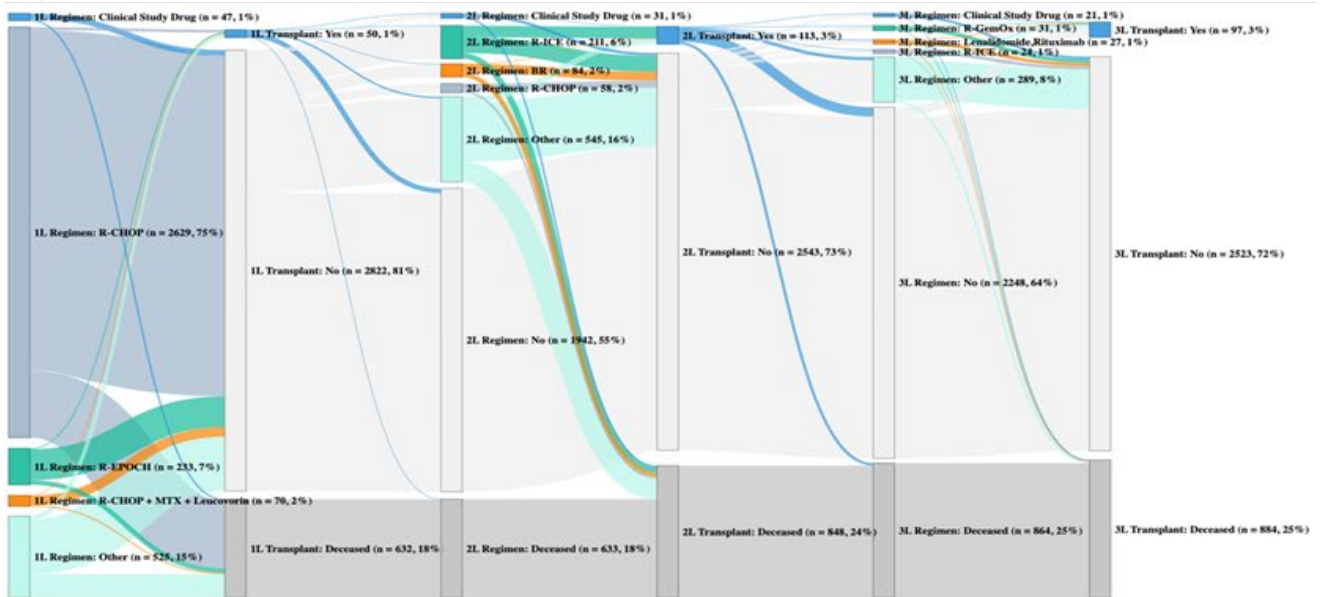
^a Adjusted hazard ratios are estimated comparing patients treated with 1L R-EPOCH vs. patients treated with 1L R-CHOP, adjusted for age, sex, race/ethnicity, ECOG performance status at 1L, extranodal sites, LDH ratio at 1L, year of diagnosis and group stage.

Supplemental Figure S2. Treatment patterns among patients with DLBCL by cytogenetic testing group. Dark gray flow represents patients who died before each treatment. Light gray flow represents patients who did not have a date of death and did not have document treatment. Deaths that occurred after the third line of therapy are not included in the Sankey plots.

a) DHL/THL



b) Not DHL/THL



c) No documented tests

