

Co-operative leukemogenesis in acute myeloid leukemia and acute promyelocytic leukemia reveals C/EBP α as a common target of TRIB1 and PML/RARA

Karen Keeshan,¹ Pauline Vieugué,^{2*} Shahzya Chaudhury,^{1*} Loveena Rishi,^{1†} Coline Gaillard,^{2‡} Lu Liang,^{1‡} Elaine Garcia,^{2†} Takuro Nakamura,³ Nader Omidvar,⁴ and Scott C. Kogan²

¹Paul O’Gorman Leukaemia Research Centre, Institute of Cancer Sciences, University of Glasgow, UK; ²Department of Laboratory Medicine, University of California San Francisco, CA, USA; ³Division of Carcinogenesis, The Cancer Institute, Japanese Foundation for Cancer Research, Tokyo, Japan; ⁴Department of Haematology, School of Medicine, Cardiff University, UK

^{††}Current Address: Cancer Research Center of Lyon (CRCL), Lyon, France.

[#]Current Address: Cancer Research UK Beatson Institute, Glasgow, UK.

[‡]Current Address: Genentech Inc, South San Francisco, USA.

^{‡‡}Current Address: National Engineering Research Center of Cell Products, Tianjin, PR China.

[†]Current Address: Biological and Biomedical Sciences Program, Harvard Medical School, USA.

^{*}SC and PV contributed equally to this work.

©2016 Ferrata Storti Foundation. This is an open-access paper. doi:10.3324/haematol.2015.138503

Received: October 27, 2015.

Accepted: June 24, 2016.

Pre-published: July 6, 2016.

Correspondence: scott.kogan@ucsf.edu/

karen.keeshan@glasgow.ac.uk

Supplementary Figure legend

Supplementary Figure S1: Overexpression of TRIB proteins abrogates ATRA-mediated differentiation of NB4 cells. **A)** Western blot analysis for C/EBP β in direct lysis samples prepared from NB4 cells transduced with control MigR1, MigR1-TRIB1, and MigR1- Δ C4 and treated with 1 μ M ATRA for indicated time-point. **B)** NB4 cells were transduced with control NGFR and NGFR-TRIB2 vectors, sorted and treated with 1 μ M ATRA for 4 days and cell morphology assessed. **C)** QPCR analysis of *G-CSFR* mRNA levels in NB4 cells transduced with control NGFR and NGFR-TRIB2, and treated with 1 μ M ATRA for indicated time-points. **D)** Western blot analysis for C/EBP α , C/EBP β and PU.1 in direct lysis samples prepared from NB4 cells transduced with control NGFR and NGFR-TRIB2 and treated with 1 μ M ATRA for indicated time-points. Actin was used as a loading control. h, hours. (* unspecific band).

Supplementary Materials and Methods

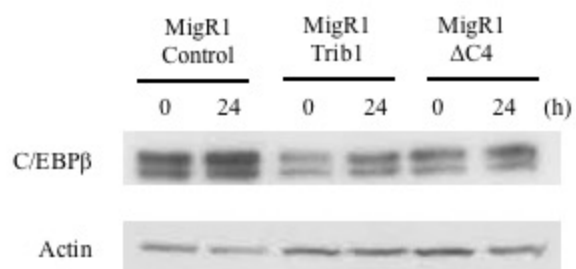
Gene	Primer sequence
hTRIB1	For CTTCAAGCAGATTGTCTCCGC Rev CTAAGCTGGGTTCTCTCCTCC
mTRIB1	For GTTCGTCTTCTCCACCGAGG Rev CGCCTTCCAGAGTAGGTCC
hGM-CSFR	For AGCATGTCCCCACAACCTGTGTC Rev TGATTTATGTGCAGGCCTGG

Antibodies:

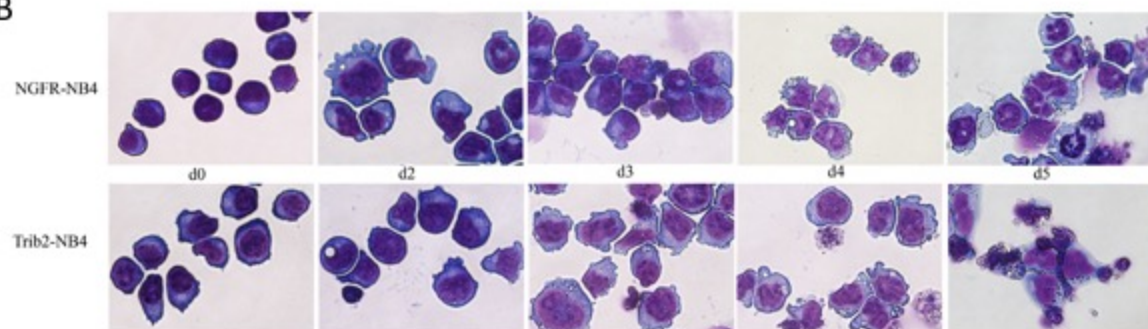
Anti-C/EBP β (Santa Cruz sc-150), anti-PU.1 (Santa Cruz sc-352).

Figure S1

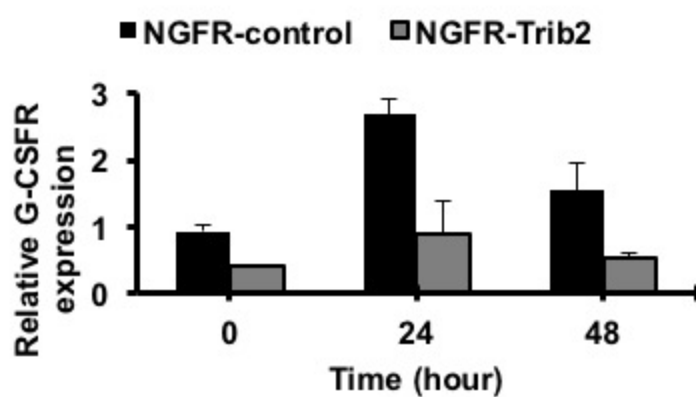
A



B



C



D

