

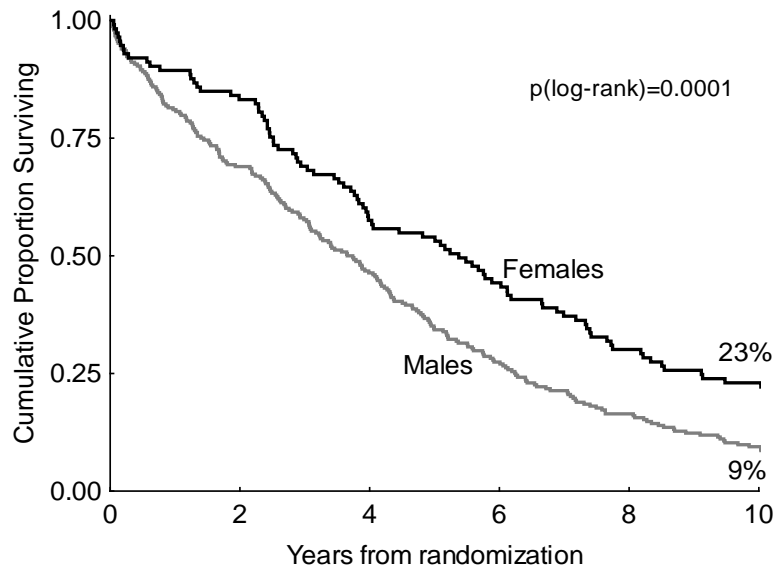
The clinical significance of patients' sex in chronic lymphocytic leukemia

Daniel Catovsky,¹ Rachel Wade,² and Monica Else¹

¹Haemato-Oncology Research Unit, Division of Molecular Pathology, The Institute of Cancer Research, London; and ²Clinical Trial Service Unit, Oxford, UK.

©2014 Ferrata Storti Foundation. This is an open-access paper. doi:10.3324/haematol.2013.101378
Manuscript received on November 19, 2013. Manuscript accepted on March 18, 2014.
Correspondence: daniel.catovsky@icr.ac.uk

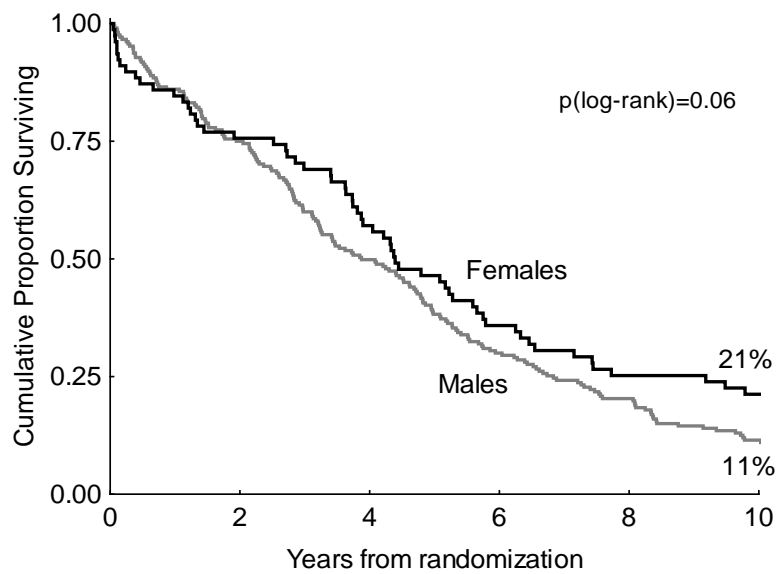
SUPPLEMENTARY FIGURE 1: Overall survival by sex in each individual randomized trial



Patients at risk:

Females	113	94	65	50	34	26
Males	250	171	115	68	40	23

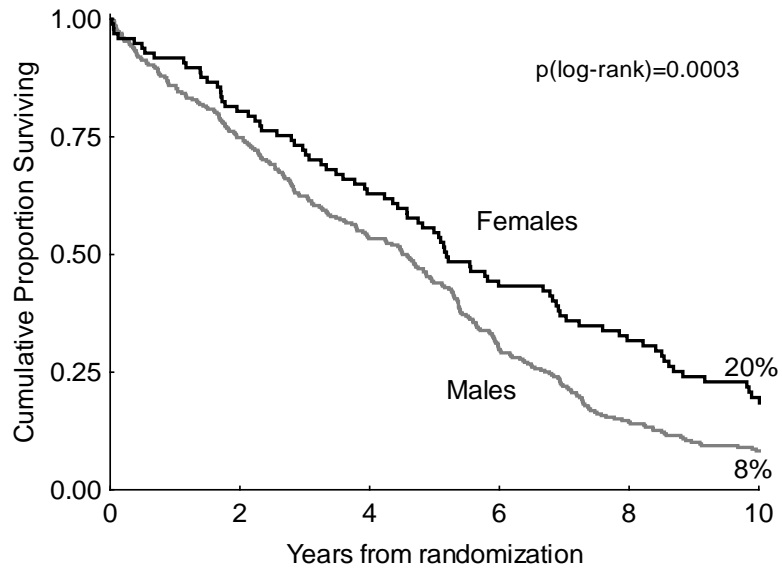
1A: CLL1 (363 patients)



Patients at risk:

Females	78	59	43	27	19	16
Males	208	155	103	62	42	23

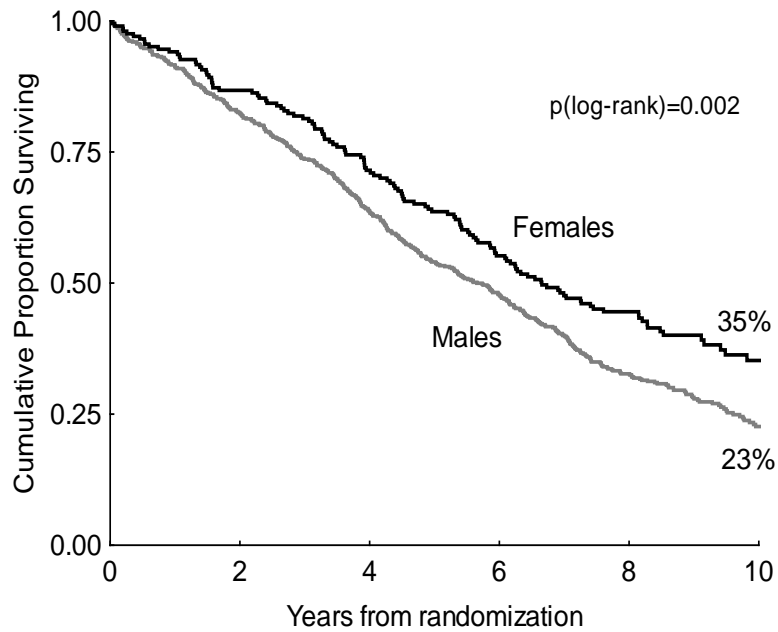
1B: CLL2 (286 patients)



Patients at risk:

Females	97	78	61	42	29	17
Males	298	223	159	88	41	22

1C: CLL3 (395 patients)

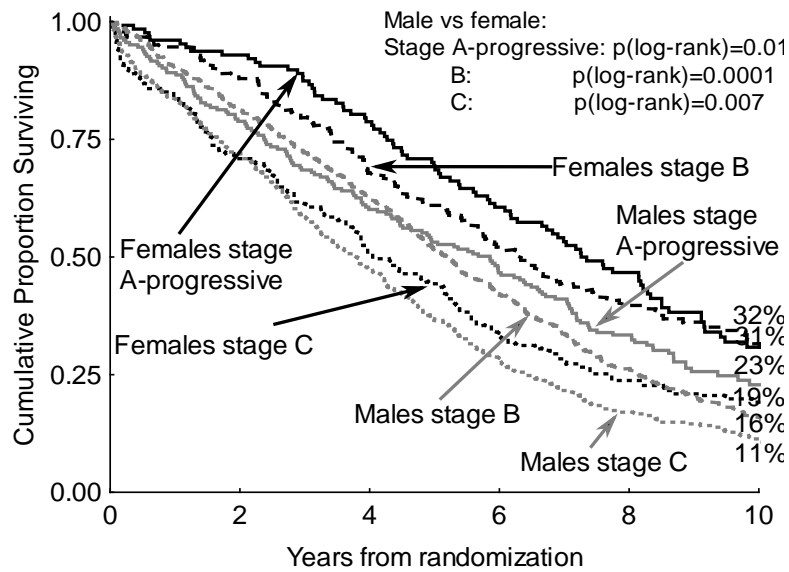


Patients at risk:

Females	204	177	145	111	82	32
Males	573	472	364	269	163	58

1D: LRF CLL4 (777 patients)

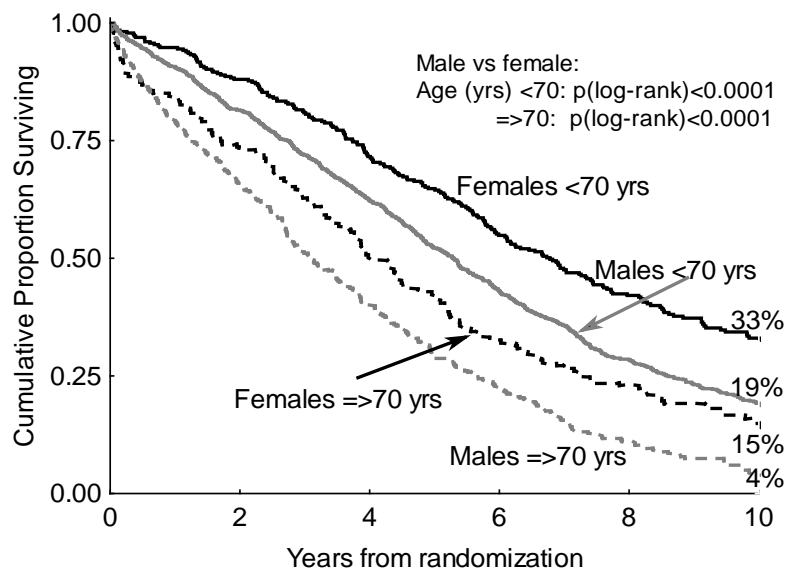
SUPPLEMENTARY FIGURE 2: Overall survival by sex within sub-groups



Patients at risk:

Stage A:	F	127	118	100	76	55	28
	M	203	160	122	93	63	23
Stage B:	F	182	160	121	93	66	34
	M	582	471	363	241	138	63
Stage C:	F	183	130	93	61	43	29
	M	544	390	256	153	85	40

2A: Overall survival by sex within each disease stage (all randomized trials)

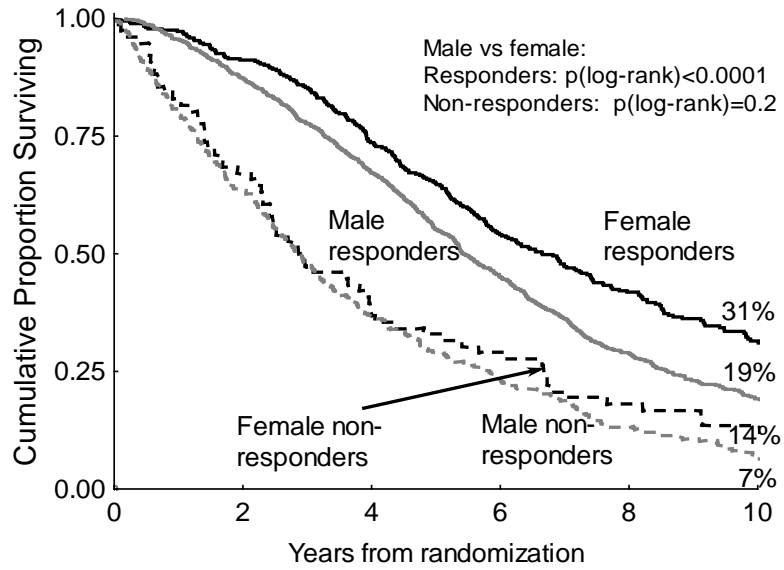


Patients at risk:

Age <70 y:	F	325	286	231	176	126	74
	M	952	773	591	405	248	119
Age ≥70 y:	F	167	122	83	54	38	17
	M	377	248	150	82	38	7

2B: Overall survival by sex within each age group (all randomized trials)

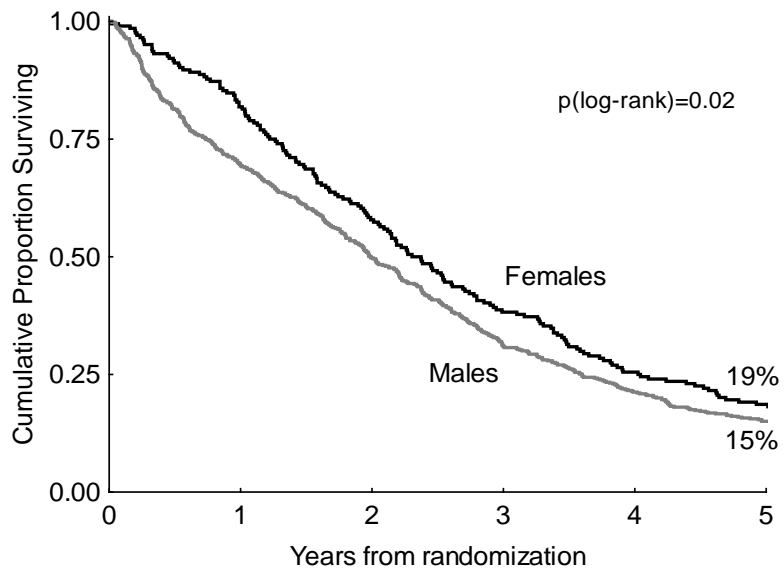
SUPPLEMENTARY FIGURE 3: Overall survival with response to treatment, and progression-free survival, by sex



Patients at risk:

Responders:	F	362	330	264	193	142	75
	M	864	754	580	386	231	102
Non-responders:	F	76	51	29	22	13	9
	M	354	224	130	82	40	18

3A: Overall survival by sex and response to first-line treatment (all randomized trials)



Patients at risk:

Females	204	167	118	78	52	38
Males	573	398	285	177	120	85

3B: Progression-free survival by sex (LRF CLL4 trial only)