

## Baseline characteristics and disease burden in patients in the International Paroxysmal Nocturnal Hemoglobinuria Registry

Hubert Schrezenmeier,<sup>1</sup> Petra Muus,<sup>2</sup> Gérard Socié,<sup>3</sup> Jeffrey Szer,<sup>4</sup> Alvaro Urbano-Ispizua,<sup>5</sup> Jaroslaw P. Maciejewski,<sup>6</sup> Robert A. Brodsky,<sup>7</sup> Monica Bessler,<sup>8</sup> Yuzuru Kanakura,<sup>9</sup> Wendell Rosse,<sup>10</sup> Gus Khursigara,<sup>11</sup> Camille Bedrosian,<sup>11</sup> and Peter Hillmen<sup>12</sup>

<sup>1</sup>Institute of Clinical Transfusion Medicine and Immunogenetics, German Red Cross Blood Transfusion Service Baden-Württemberg-Hessen, and Institute of Transfusion Medicine, University of Ulm, Germany; <sup>2</sup>Radboud University Medical Centre, Nijmegen, The Netherlands; <sup>3</sup>Hôpital Saint-Louis and Institut National de la Santé et de la Recherche Médicale, Paris, France; <sup>4</sup>Royal Melbourne Hospital, Australia; <sup>5</sup>Hospital Clinic, University of Barcelona, Institute of Research Josep Carreras, Barcelona, Spain; <sup>6</sup>Taussig Cancer Center, Cleveland Clinic, Cleveland, OH, USA; <sup>7</sup>Johns Hopkins University School of Medicine, Baltimore, MD, USA; <sup>8</sup>Department of Hematology, University of Pennsylvania School of Medicine, and Children's Hospital of Philadelphia, PA, USA; <sup>9</sup>Osaka University Graduate School of Medicine, Japan; <sup>10</sup>Duke University Medical Center, Durham, NC, USA; <sup>11</sup>Alexion Pharmaceuticals, Inc., Cheshire, CT, USA; and <sup>12</sup>Department of Haematology, St James' University Hospital, Leeds, UK

---

©2014 Ferrata Storti Foundation. This is an open-access paper. doi:10.3324/haematol.2013.093161

Manuscript received on June 12, 2013. Manuscript accepted on January 29, 2014.

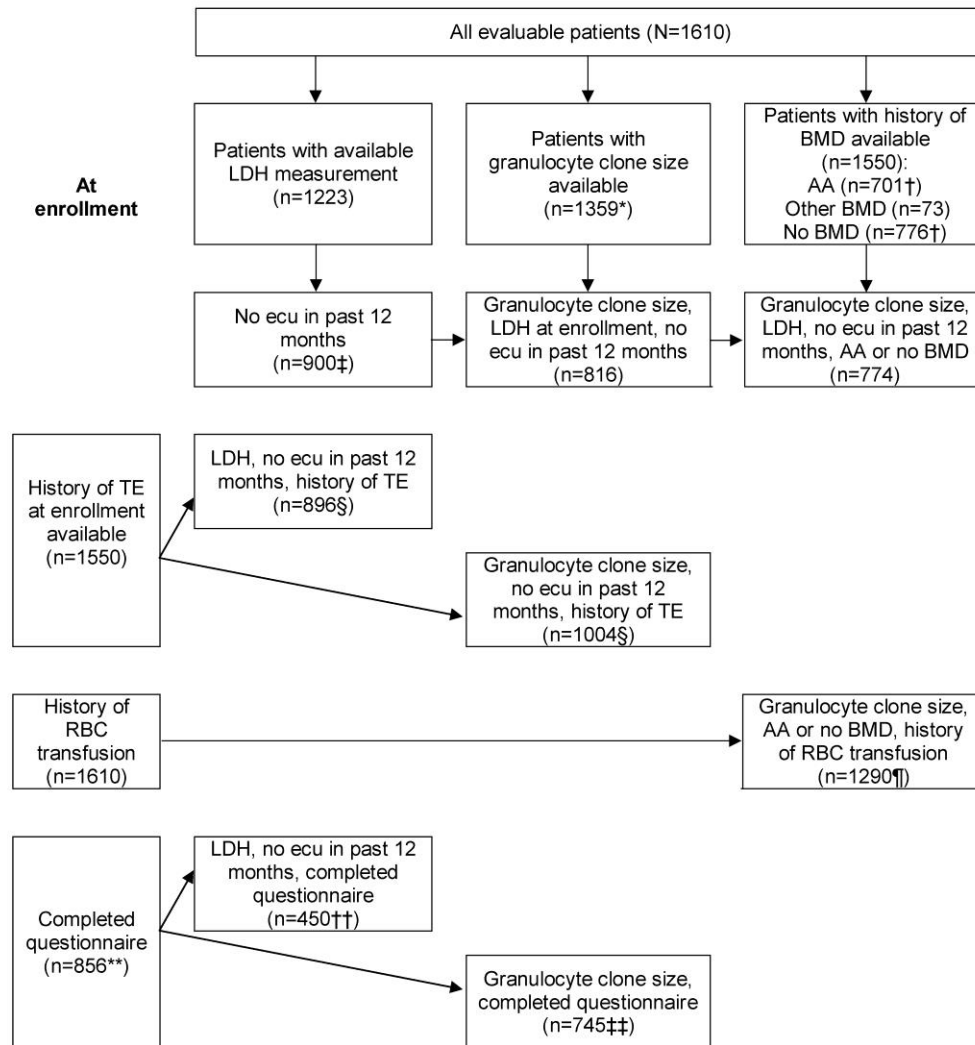
Correspondence: peter.hillmen@nhs.net

**Supplementary Table S1.** Participating countries enrolling patients into the registry as of June 30, 2012.

| <b>Continent/Country</b>                | <b>Number of patients</b> | <b>Percentage of patients<br/>(N=1610)</b> |
|---|---------------------------|--|
| <b>Europe (n=1203)</b>                  |                           |  |
| United Kingdom                          | 295                       | 18.3                                       |
| Germany                                 | 221                       | 13.7                                       |
| France                                  | 184                       | 11.4                                       |
| Russia                                  | 116                       | 7.2  |
| Spain                                   | 114                       | 7.1  |
| The Netherlands                         | 92                        | 5.7  |
| Italy                                   | 54                        | 3.4  |
| Sweden                                  | 32                        | 2.0  |
| Belgium                                 | 26                        | 1.6  |
| Denmark                                 | 26                        | 1.6  |
| Switzerland                             | 18                        | 1.1  |
| Finland                                 | 13                        | 0.8  |
| Austria                                 | 7                         | 0.4  |
| Norway                                  | 4                         | 0.3  |
| Luxembourg                              | 1                         | 0.1  |
| <b>North America (n=286)</b>            |                           |  |
| United States                           | 275 <sup>a</sup>          | 17.1                                       |
| Canada                                  | 11                        | 0.7  |
| <b>Australasia (n=75)</b>               |                           |  |
| Australia                               | 63                        | 3.9  |
| New Zealand                             | 12                        | 0.8  |
| <b>Asia (n=30)</b>                      |                           |  |
| Taiwan                                  | 22                        | 1.4  |
| South Korea                             | 5                         | 0.3  |
| Japan                                   | 3                         | 0.2  |
| <b>Central/South America<br/>(n=16)</b> |                           |  |
| Argentina                               | 11                        | 0.7  |
| Mexico                                  | 4                         | 0.3  |
| Chile                                   | 1                         | 0.1  |

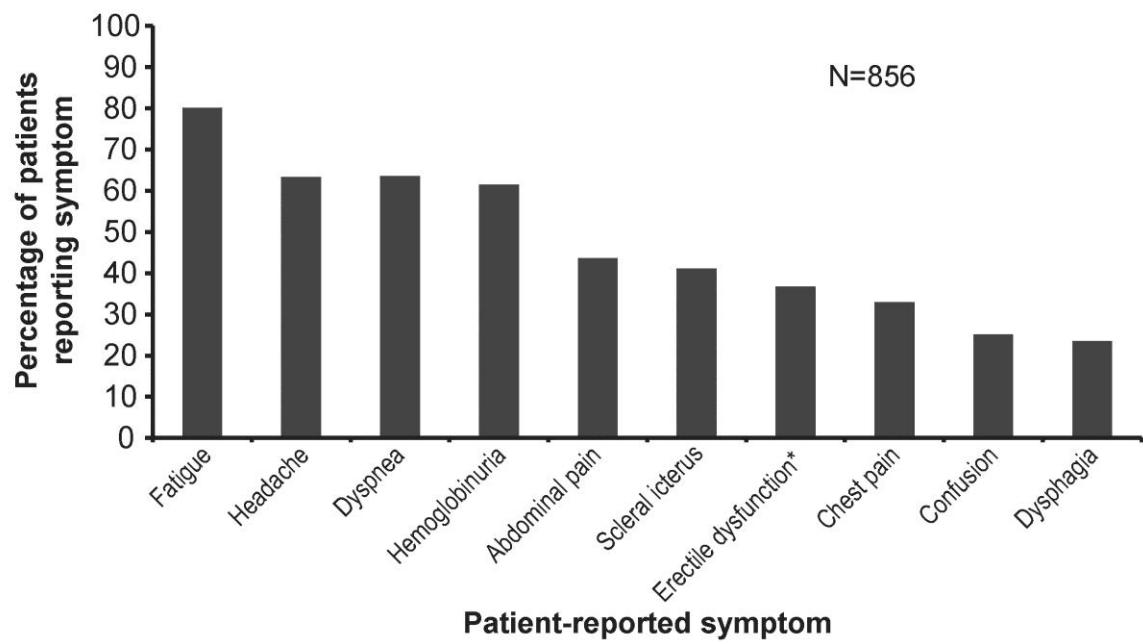
<sup>a</sup>Includes 1 patient from Puerto Rico.

**Supplementary Figure S1.** Number of patients included in each assessment.



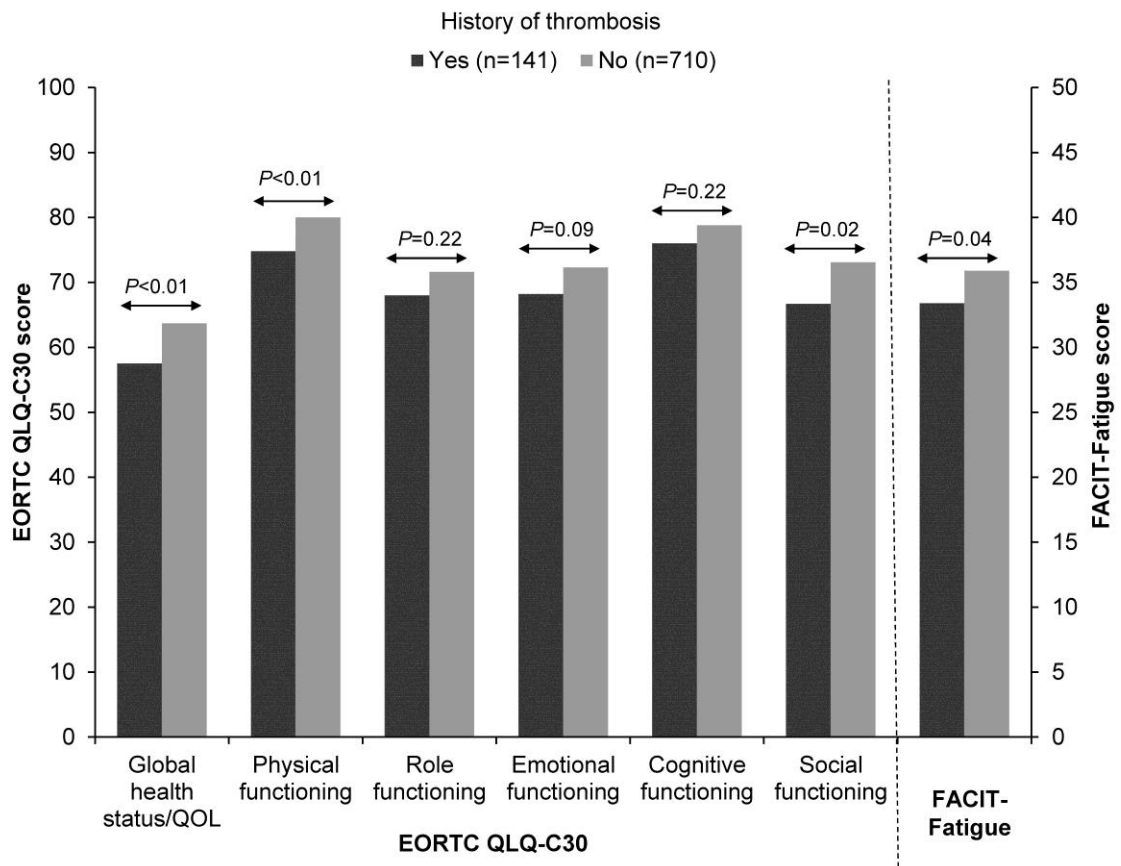
\*Table 3; †Table 2; ‡Table 1; §Figure 2A; ¶Figure 2B; \*\*Supplementary Figure S2; ††Figure 3B; ‡‡Figure 3A.

**Supplementary Figure S2.** Patients reporting PNH-related symptoms on baseline questionnaire.



\*Male patients only, n=410.

**Supplementary Figure S3.** Patient-reported EORTC QLQ-C30 QoL and FACIT-Fatigue assessments.



**Supplementary Figure S4.** Percentage of patients hospitalized in the 6 months prior to baseline questionnaire by patient-reported symptom.

